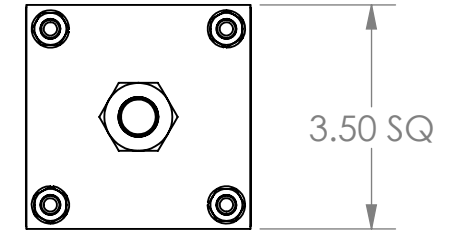
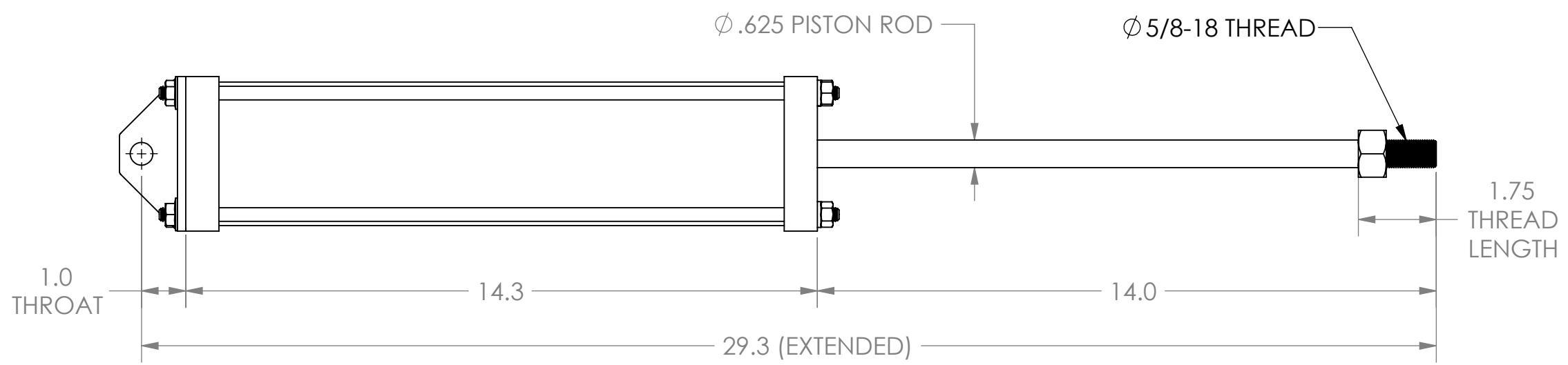
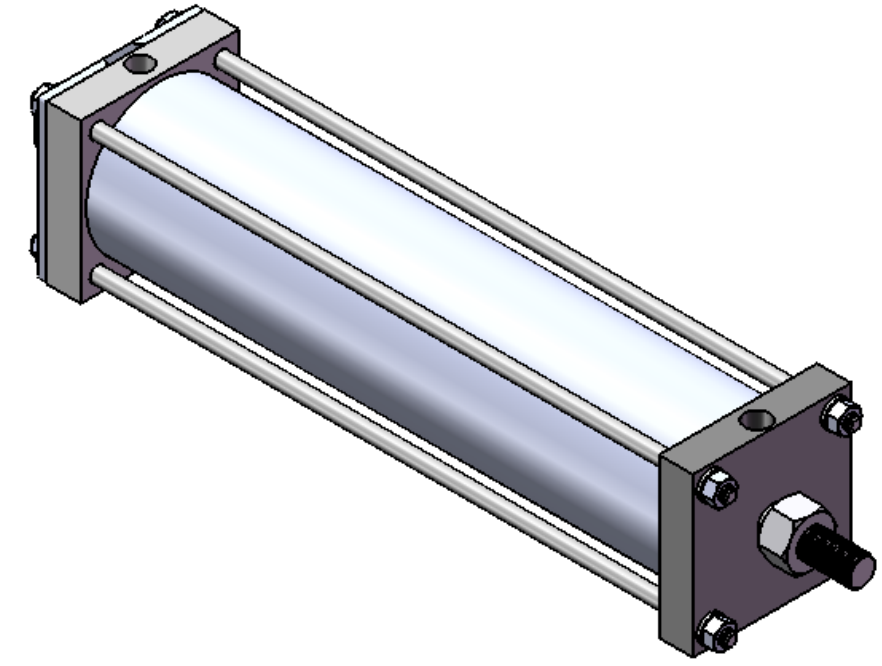
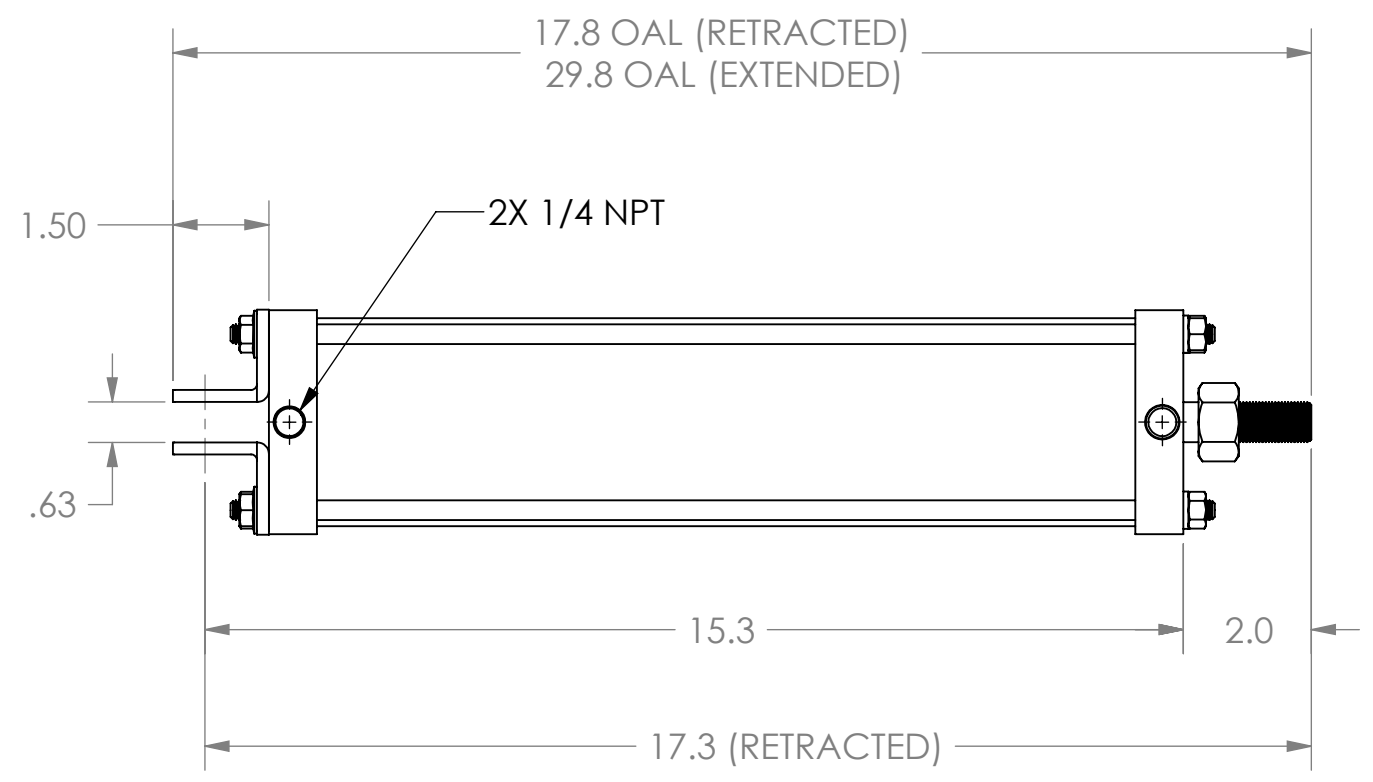


REVISIONS			
REV	DESCRIPTION	APPROVAL	DATE



NOTES:
BORE= ϕ 3"
STROKE= 12"
EXTENSION FORCE @100 PSI= 707
RETRACT FORCE @ 100 PSI= 697
WEIGHT= 6.30 LBS

THIS MATERIAL IS THE PROPERTY OF APSCO, INC. AND IS FURNISHED FOR THE PURPOSE INDICATED. ANY AND ALL CONFIDENTIAL, PROPRIETARY, PATENT AND OTHER RIGHTS IN THE SUBJECT MATTER BEING RETAINED INCLUDING ANY EXCLUSIVE RIGHTS OF USE AND/OR MANUFACTURE AND/OR SALE. POSSESSION OF THIS MATERIAL DOES NOT CONVEY ANY PERMISSION TO REPRODUCE THIS MATERIAL IN WHOLE OR IN PART, OR MANUFACTURE THE SUBJECT MATTER SHOWN THEREIN OR USE THE CONFIDENTIAL OR PROPRIETARY INFORMATION THEREON. SUCH PERMISSION TO BE GRANTED ONLY BY SPECIFIC AUTHORIZATION IN WRITING BY AN OFFICER OR OTHER AUTHORIZED AGENT OF APSCO, INC. ITS DIVISIONS OR SUBSIDIARIES.

UNLESS OTHERWISE SPECIFIED DIMENSIONS ARE IN INCHES TOLERANCES ARE:
 DECIMALS: X = \pm .03, XX = \pm .010, XXX = \pm .005
 ANGLES = \pm 1/2°, FRACTION = \pm .015
 SURFACE TEXTURE OR BETTER

APSCO, Inc. 8178 EAST 44TH STREET TULSA, OK 74145			
DRAWN MC	DATE 02-03-10	APPROVED	DATE
ASSY, C-6512			
SIZE B	CAGE CODE 4V549	DRAWING NO. C-6512	REV -
DO NOT SCALE DRAWING			SHEET 1 OF 1